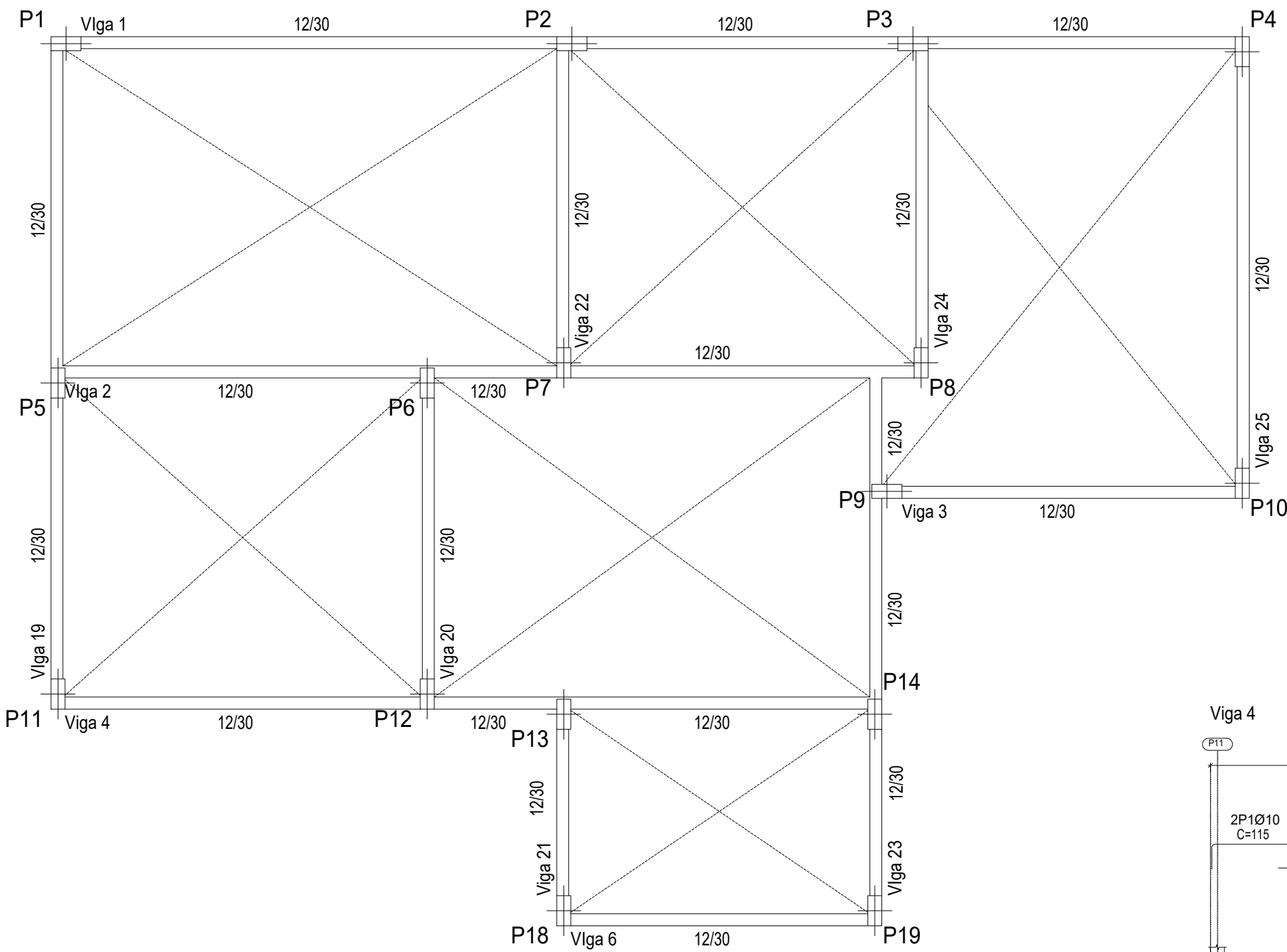
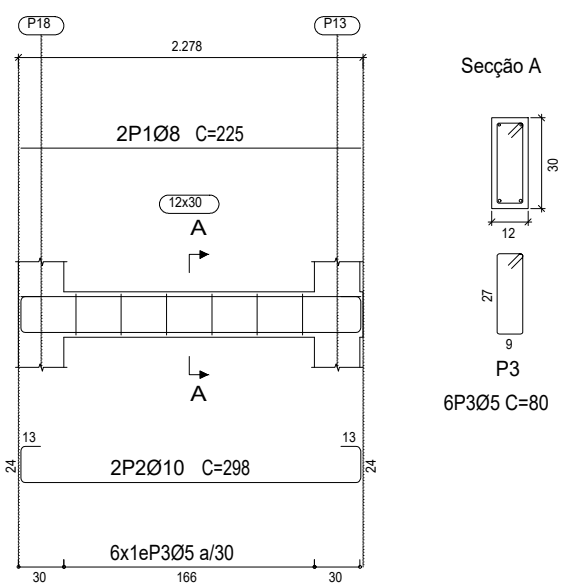


Baldrame  
Planta elementos estruturais  
Betão: C30, em geral  
Escala: 1:50



Baldrame  
Desenho de vigas  
Betão: C30, em geral  
Aço em varões: CA-50 e CA-60  
Aço em estribos: CA-50 e CA-60  
Escala pormenores 1:50  
Escala cortes 1:25  
Escala aberturas 1:25

Viga 21

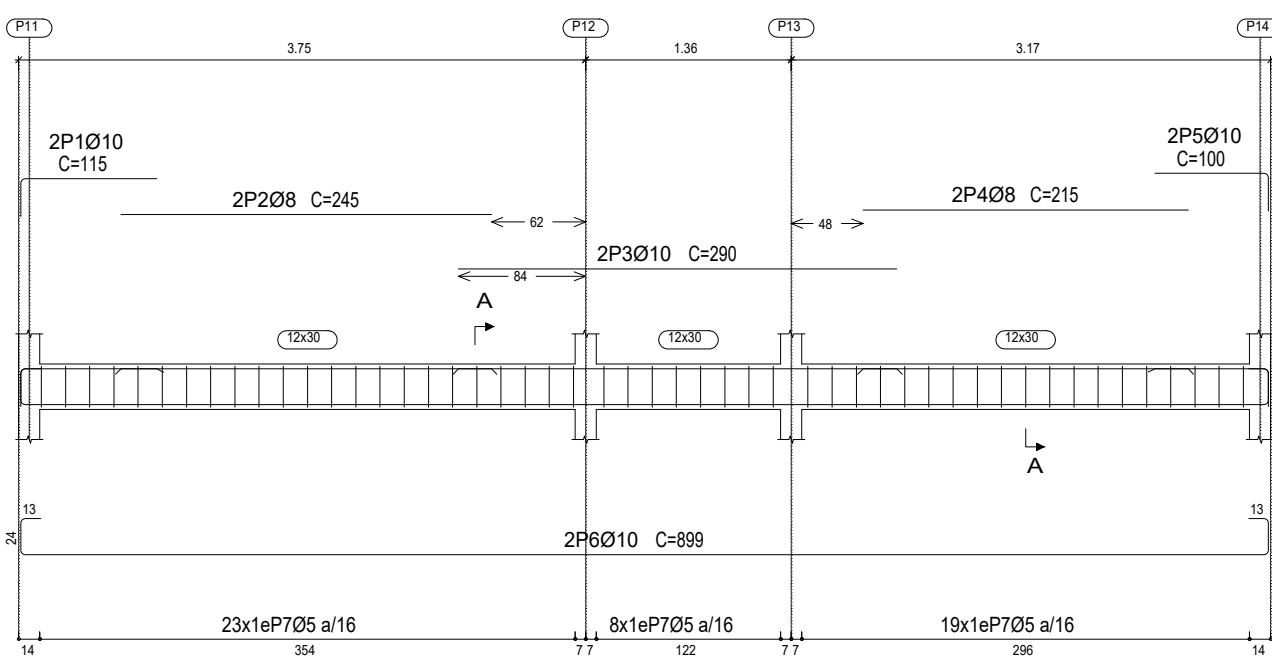


Seção A

P3

6P3Ø5 C=80

Viga 4

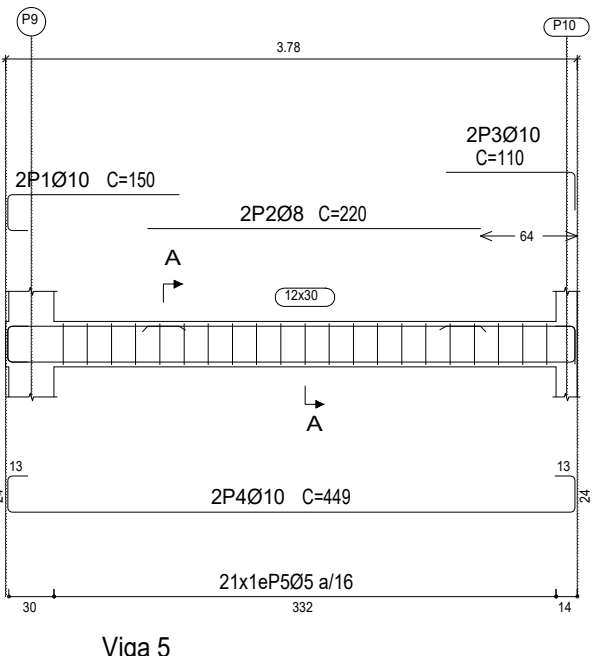


Seção A

P7

50P7Ø5 C=80

Viga 3

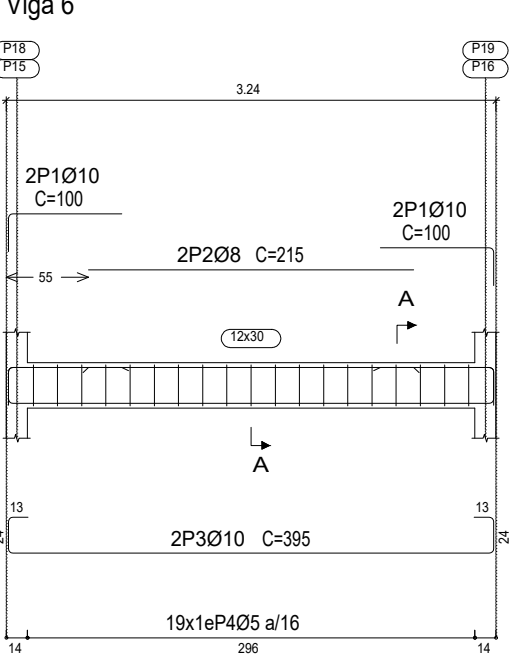


Seção A

P5

21P5Ø5 C=80

Viga 5

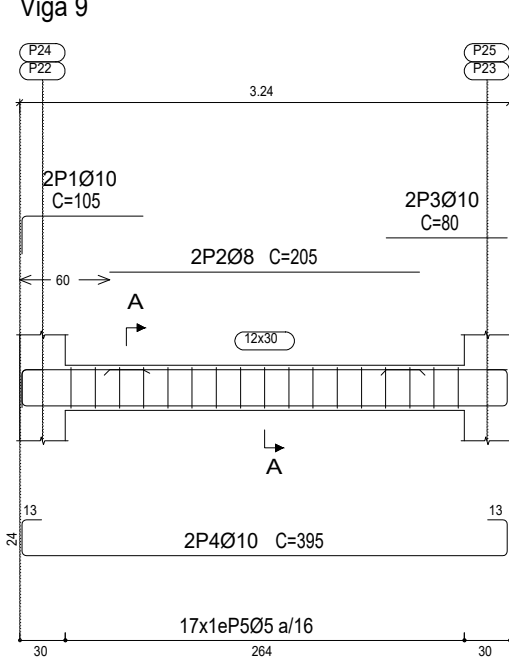


Seção A

P10

70P10Ø5 C=80

Viga 8

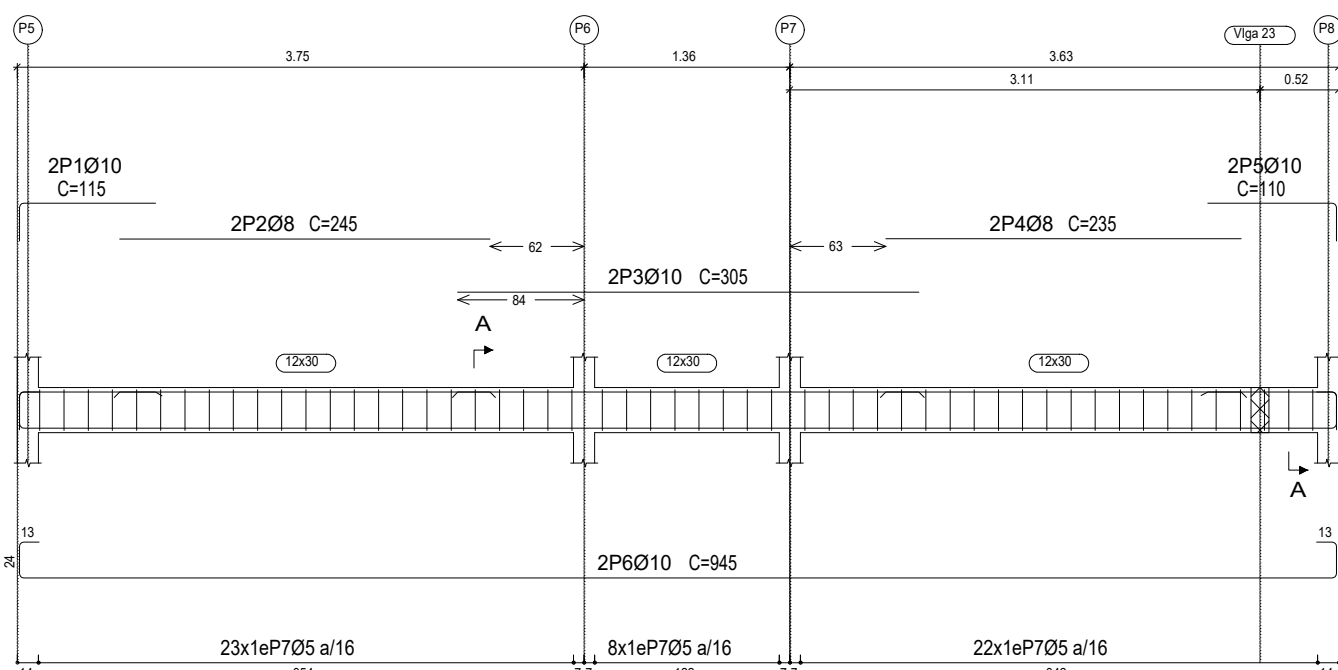


Seção A

P5

17P5Ø5 C=80

Viga 2

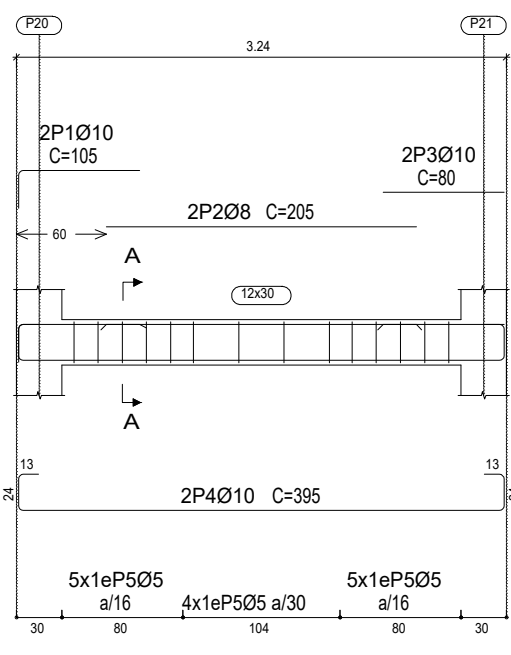


Seção A

P7

53P7Ø5 C=80

Viga 7

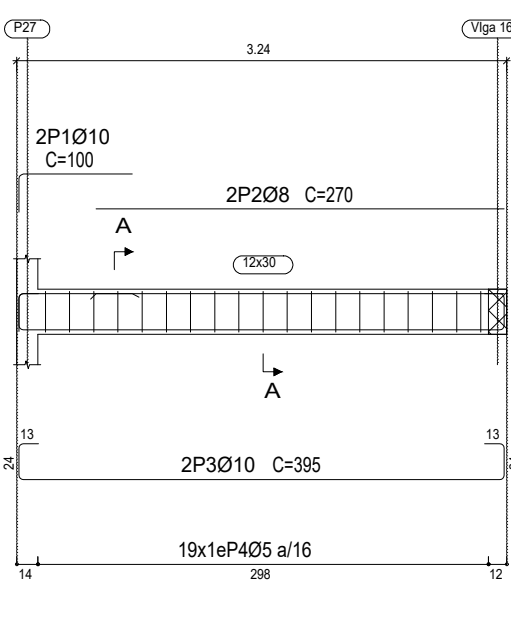


Seção A

P5

14P5Ø5 C=80

Viga 10

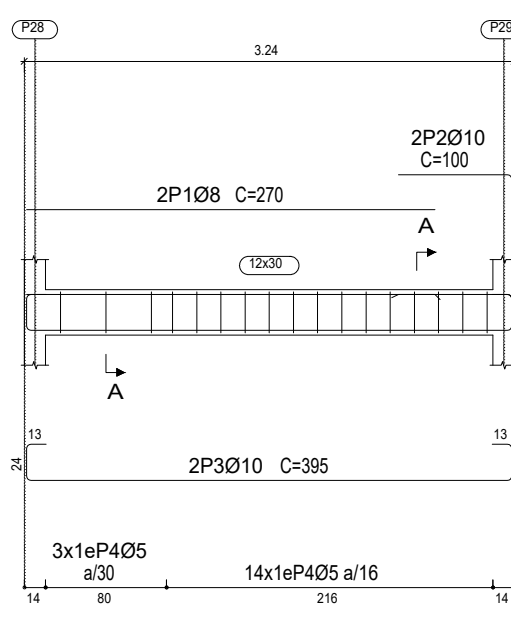


Seção A

P4

19P4Ø5 C=80

Viga 11

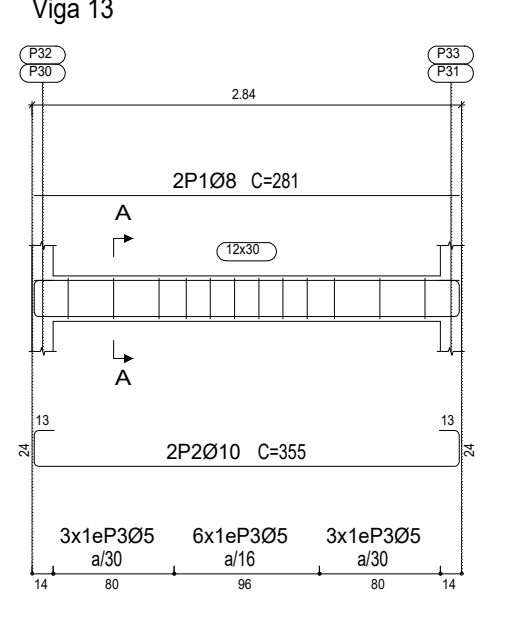


Seção A

P4

17P4Ø5 C=80

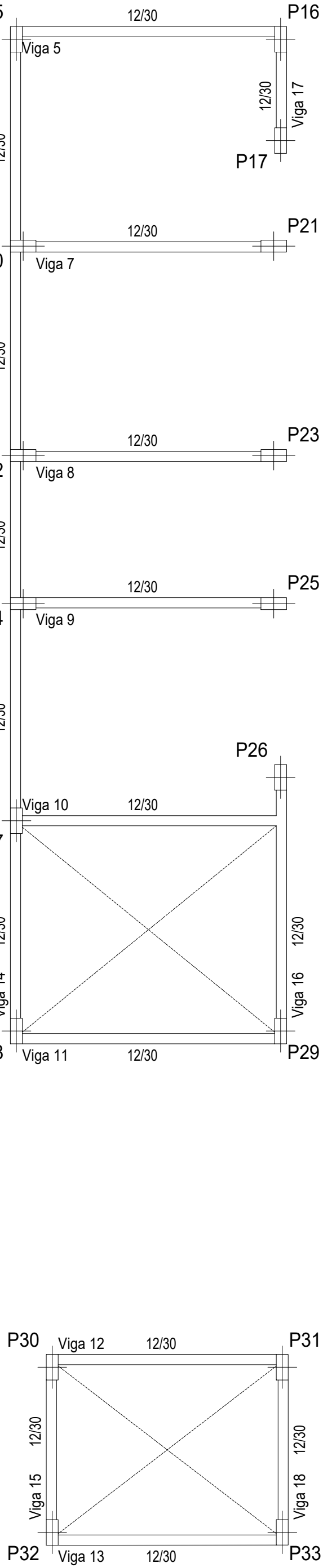
Viga 12



Seção A

P3

12P3Ø5 C=80



Elemento	Pos.	Diâm.	Q.	Esquema (cm)	Comp. (cm)	Total (cm)	CA-50 (kg)	CA-60 (kg)	
Viga 4	1	Ø10	2		115	230	1.4		
	2	Ø8	2		245	490	1.9		
	3	Ø10	2		290	580	3.6		
	4	Ø8	2		215	430	1.7		
	5	Ø10	2		100	200	1.2		
	6	Ø10	2		899	1798	11.1		
	7	Ø5	50		80	4000		6.3	
	Total+10%:						23.0	6.9	
	Viga 1	1	Ø10	2		150	300	1.8	
		2	Ø8	2		325	650	2.6	
3		Ø10	2		205	410	2.5		
4		Ø8	2		195	390	1.5		
5		Ø10	2		190	380	2.3		
6		Ø8	2		205	410	1.6		
7		Ø10	2		105	210	1.3		
8		Ø10	2		908	1816	11.2		
9		Ø10	2		384	768	4.7		
10		Ø5	70		80	5600		8.8	
Total+10%:						32.5	9.7		
Viga 2	1	Ø10	2		115	230	1.4		
	2	Ø8	2		245	490	1.9		
	3	Ø10	2		305	610	3.8		
	4	Ø8	2		235	470	1.9		
	5	Ø10	2		110	220	1.4		
	6	Ø10	2		945	1890	11.6		
	7	Ø5	53		80	4240		6.7	
Total+10%:						24.2	7.4		
Viga 21	1	Ø8	2		225	450	1.8		
	2	Ø10	2		298	596	3.7		
	3	Ø5	6		80	480		0.8	
Total+10%:						6.1	0.9		
Viga 3	1	Ø10	2		150	300	1.8		
	2	Ø8	2		220	440	1.7		
	3	Ø10	2		110	220	1.4		
	4	Ø10	2		449	898	5.5		
	5	Ø5	21		80	1680		2.6	
Total+10%:						11.4	2.9		
Viga 5=Viga 6	1	Ø10	4		100	400	2.5		
	2	Ø8	2		215	430	1.7		
	3	Ø10	2		395	790	4.9		
	4	Ø5	19		80	1520		2.4	
Total+10%:						10.0	2.6		
Viga 7	1	Ø10	2		105	210	1.3		
	2	Ø8	2		205	410	1.6		
	3	Ø10	2		80	160	1.0		
	4	Ø10	2		395	790	4.9		
	5	Ø5	14		80	1120		1.8	
Total+10%:						9.7	2.0		
Ø5: 0.0							47.9		
Ø8: 36.9							0.0		
Ø10: 142.0							0.0		
Total:							178.9	47.9	



## PREFEITURA MUNICIPAL DE PETROLÂNDIA

TIPOLOGIA:	Projeto - Reforma e Ampliação - PSF Apolônio Sales		
ENDEREÇO:	Projeto Apolônio Sales Petrolândia - Pe		
QUADRO DE ÁREAS:		INFORMAÇÕES:	
REFORMA	351,68m²		
CONTRATANTE:	Prefeitura Municipal de Petrolândia	CPF/CNPJ:	10.106.235/0001-16
CONTATO EMPRESA:	Projeto de Engenharia	CONTRATO CONTRATANTE:	(87)3851-1156
CAU/CREA:		REVISOR DO PROJETO:	
ESTRUTURA		DATA:	Agosto - 2025
		PRANCHA:	02/ 05